



existing



proposed

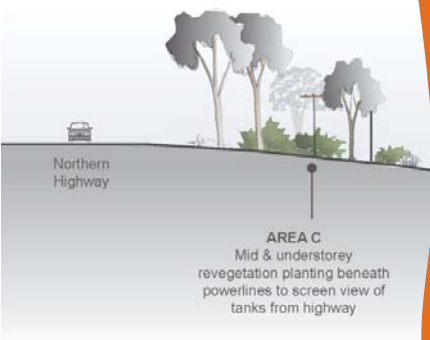


existing

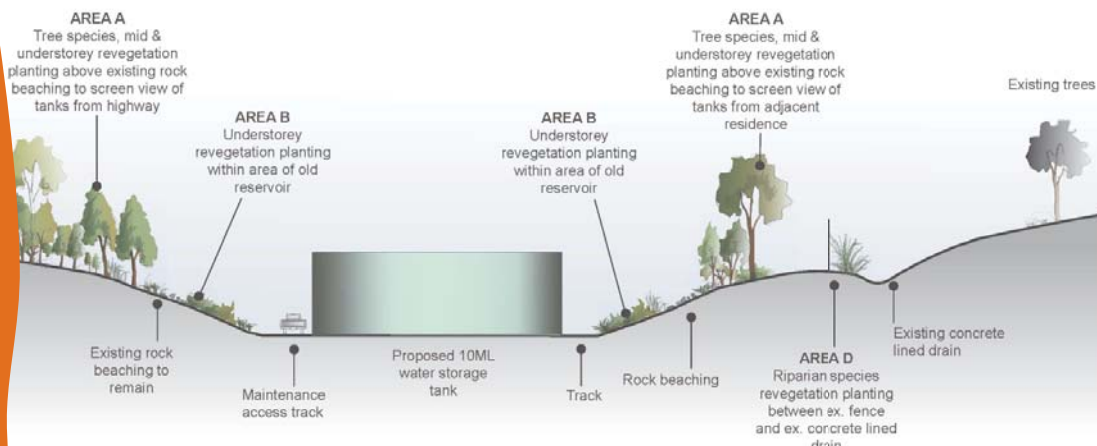


proposed

Existing roadside trees



**AREA C**  
Mid & understorey  
revegetation planting beneath  
powerlines to screen view of  
tanks from highway



## Visual communication

Images showing proposed changes to the existing landscape are an important element in our communication with clients and communities. After developing a thorough understanding of the site conditions, constraints and opportunities, we develop a series of design responses which provide a range of options for the client and clearly communicate any proposed changes to the site. We have developed an effective method for developing photomontage images. This allows us to clearly explain proposed site changes to audiences who may be less comfortable reading plans.

In developing landscape plans, design solutions and visual impact assessments, we are able to provide a wide range of visual communication skills including; photomontage, sketch up models, concept plans, section drawings, documentation and interpretation design.